

# Aluminium Sliding Door with Flush Frame

## DA-SkyLine

In times when minimalism is the leading aesthetic of contemporary design, DA-SkyLine by DAKO, the high-quality sliding door system with a concealed frame, becomes one of the brand's flagship solutions.

### Near unlimited glazing capabilities

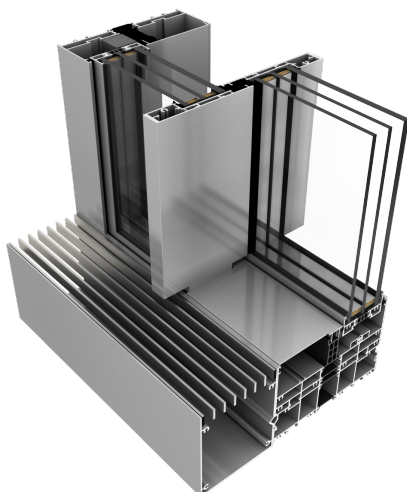
The use of narrow aluminium profiles for the structure maximises the glazing surface, blurring the border between the interior and the outside world. That's why it's a perfect solution for anyone who wishes to fill their space with light and showcase the vistas.

### Luxury design

Concealing the frame in walls, ceiling and floor gives any building with the **DA-SkyLine** door a luxurious character.

### Top-grade thermal insulation

Les paramètres d'isolation thermique garantissent un intérieur chaud et permettent de limiter l'énergie nécessaire pour chauffer la maison. Un avantage non négligeable pour des raisons financières et environnementales.



### Technical details:

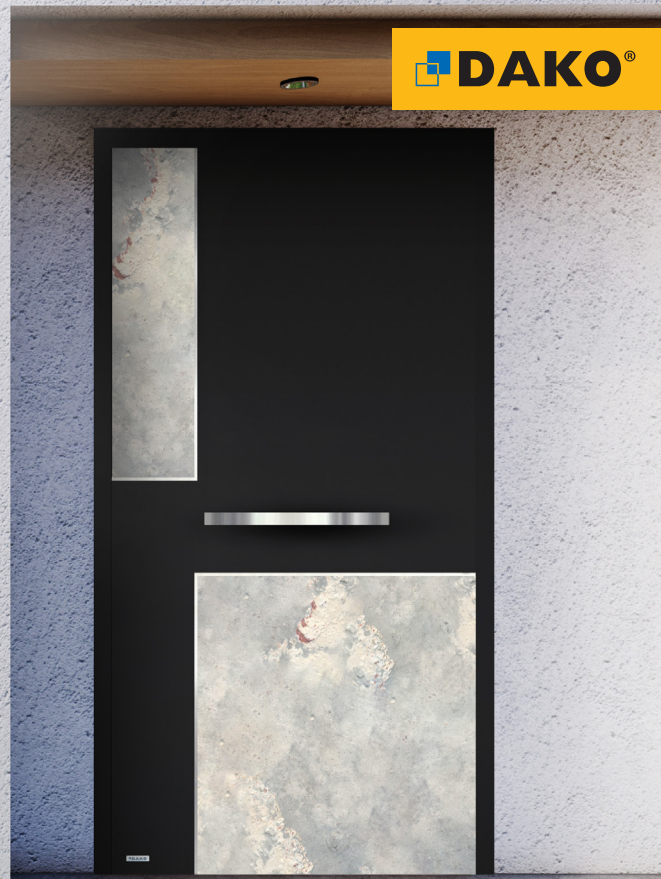
- ✓ U-value: from 0.85 W/(m<sup>2</sup>K)\*
- ✓ installation depth: Sash: 71 mm | Doorframe: 190 mm (2-rail) & 292 mm (3-rail)
- ✓ visible panel interlocking width – 25 mm
- ✓ max door height – 4 m
- ✓ max door width – 12 m
- ✓ max sash surface – 6.5 m<sup>2</sup>
- ✓ max sash weight – 750 kg
- ✓ no. of chambers/gaskets – 3/2

\* For doors with the a sash size of: 2070 x 3440 mm, with 3-pane units with the Ug coefficient = 0.5 W/(m<sup>2</sup>K) and a warm spacer bar

# Aluminium Overlapping Door

DA-77N – SALWIA model

A combination of aluminium and natural stone décors ensures a grand design that's in line with the current trends. A stainless steel handrail completes the whole unit that became the visual axis of the entire structure, while the two-way overlapping sash design makes the DAKO door's surface uniform both from the outside, and from inside the room.



## Striking design

Delicate combination of smooth aluminium and décors made from natural stone ensures that the door has a unique character. It's complete with a horizontal stainless steel handrail. The whole unit can make even a simple building fashionable and classy.

## Safety of your family

With the use of additional safety enhancing solutions, you can give your family a peace of mind. The **RC2** or **RC3** class external door guarantees high anti-burglary properties.

## Warm solution

High thermal insulation parameters ensure a warm interior and cut back on the energy needed to heat your home. It's crucial from the perspective of financial savings and ecology.

## Top quality guarantee

The use of the best available materials ensures the door's high aesthetic value, as well as comfortable and reliable use.



## Technical details:

- ✓ system with a thermal parameter  $U_d=0.8 \text{ W/m}^2\text{K}^*$
- ✓ 4-pocket profile with the depth of 77 mm
- ✓ aluminium threshold with thermal separator 20 mm high
- ✓ panel 77 mm thick filled with polyurethane foam
- ✓ 2-chamber pane, two-way secured 33.1/24/6/24/33.1  $U_g=0.5 \text{ W/m}^2\text{K}$
- ✓ wind load resistance C2/B2
- ✓ water tightness 5A
- ✓ air permeability class 2

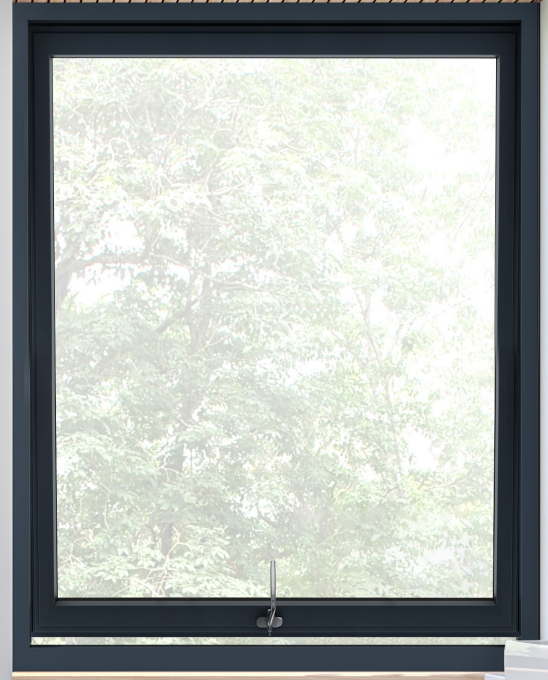
\* Values of  $U_d$  coefficient were obtained by calculation method in accordance with PN-EN ISO 10077-1, PN-EN ISO 10077-2 and PN-EN ISO 12631. The  $U_d$  coefficient value was calculated for a door size 1300 mm x 2350 mm



# Outwards Opening Aluminium Windows

## DA-77 Opening Outwards

The DA-77 series of outwards opened windows is a modern solution that will fit any type of building. With the use of four-chamber profile with thermal separators, they ensure ultimate thermal & acoustic insulation parameters.



### Wide configuration options of DA-77 series

The DA-77 series has a great number of configuration options. Apart from the outwards opening type, there are a few system variants available:

- standard,
- corner windows,
- concealed sash windows,
- fire windows.

That makes DA-77 windows a frequent pick by the investors.

### Minimalist style

The **DA-77** outwards opening windows can be equipped with visible, traditional hinges, or a concealed solution – scissor hinges that highlight the minimalist style of aluminium windows.

### Special glazing option

The DA-77 series windows can be fitted with special glazing packages: anti-burglary, energy-efficient, fireproof, etc.

### Very good thermal insulation

The use of top quality materials and modern solutions guarantees great thermal insulation parameters of DA-77 outwards opening windows.



#### Technical details:

- ✓ U-value\* – 0.9 W/m<sup>2</sup>K
- ✓ installation depth – Frame 77 mm | Sash 86 mm
- ✓ hinges – concealed scissor hinges or concealed scissor hinges
- ✓ glazing package – 4/18/4/18/4 warm spacer bar

\* For glass 4/18/4/18/4 and window size 48 7/16 in x 58 4/16 in (1230 mm x 1480 mm)